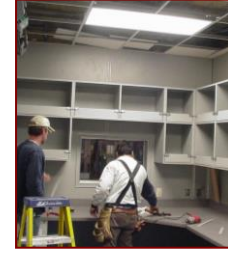


## TSC SERIES ~ Mobile Communications and Command Shelter

### Representative ITS Configuration

- Custom Drawbar, Gooseneck & 5<sup>th</sup> Wheel Tow Configurations; Electric, Hydraulic or 4S1M ABS Air Brake Systems
- GVWR Capacity to 65,000lbs (29,477kg); Complete Customized Shelters to 40'0" (12.2m)L x 8'0" (2.44m)W x 9'6" (2.9m)H
- Single or Tandem Pneumatic Masts; Typical to 60'0" (18m) Elevation; to 1,200lb (544kg) Payload Capability



### Model Series Summary:

Environmentally controlled, steel communications equipment shelters to 40'0" (12.2m)L x 8'0" (2.44m)W x 9'6" (2.9m)H OD ~ skid-mounted, reinforced corner plating for additional secondary-road protection; integrated atop a 25-Ton capacity, 65,000lb (29,477kg) GVWR, tandem 25,000lb (11,338kg) capacity each axle, lowboy trailer system configured to maximize ground clearance and transport shelter and related payload.

A representative TSC Model configuration utilizes a 5th wheel tow device, has a dual wheel tandem axle design, 25,000lb (11,338kg) capacity each axle with a GVWR of up to 65,000lbs (29,447kg). Combined with a communications equipment and personnel shelter having an estimated weight empty of 27,000lbs (12,245kg), the trailer can support up to 20,000lbs (9,070kg) of customer furnished interior equipment. The unit has an overall transport length of approximately 51'6" (15.7m), width of 8'0" (2.44m) and an overall height of approximately 12'6" (3.84m).

### TSC Series – General Trailer Description:

This 25-ton trailer has a step-deck design, is constructed of solid steel with extra heavy-duty main and perimeter framing. The trailer's skeleton framing is engineered with a minimum factor of safety of 2:1, with 4:1 in critical load areas and includes a perimeter of 8" (20.3cm) structural channel and 21" (53.3cm) main beams ~ all frame members have a minimum yield of 50 ksi. The trailer has a painted gooseneck, riser, platform and perimeter framing and the underside is sprayed with a weather protecting undercoat. An included air ride suspension package with height adjustment capabilities allows for easy trailer and shelter stabilization at site. In addition, tandem, 2-speed landing gear and bumper mounted, minimum 12,000lb (5,442kg) static capacity, drop-leg adjustable jacks' aid in the leveling of the unit.

This custom trailer utilizes an 4S1M ABS air braking system with manual parking brakes, (8) Bridgestone 255/70R 22.5 LRH tires, 10 hole hub piloted steel wheels, has a full-size spare tire and an enclosed gooseneck storage hold. An LED lighting package meeting FMVSS 108 specifications is also included as a standard.

### Pneumatic Mast Selection ~ Will-Burt Models from 30'0" (9.1m) to 60'0" (18m)

The primary benefits and features of the Will-Burt pneumatic mast includes:

- » Locking collars allow the mast to remain extended indefinitely without air pressure
- » Rugged construction of high strength heat-treated aluminum tubes and collars with low friction synthetic bearings
- » Two full-length external keys on sections; collars have matching keyways that maintain directional azimuth
- » The bumpers are designed to reduce shock on extension and retraction
- » All exterior aluminum surfaces are anodized & sealed for long life; fasteners are plated steel for corrosion resistance
- » Payload capacity of select mast models range from 150lbs to 1,200lbs (68kg – 544kg)
- » ITS secures the pneumatic mast to both the shelter wall and trailer platform using heavy-duty mounting plates and brackets
- » The TSC Series may be configured with an optional mast-top access platform with elevated control panel or as standard, a "Yoke Snagger" used to engage and disengage each mast section locking collar

## **TSC SERIES ~ Mobile Communications and Command Shelter**

### **Representative ITS Configuration**

#### **TSC Series ~ General Steel Clad Equipment Shelter Description:**

<b>Typical Shelter Dimensions</b>	A variety of custom configurations ranging in size to 40'0" (12.2m) Long x 8'0" (2.44m) Wide x 9'6" (2.9m) High (outside dimensions). Each shelter is sized according to client specifications, DOT and environmental requirements
<b>Typical Shelter Weight</b>	From 5,000lbs (2,268kg) to over 27,500lbs (12,471kg) prior to installation of ITS and/or customer equipment
<b>Standard Skid Construction</b>	Reinforced, heavy-duty perimeter steel channel skid and cross members on 24" (61cm) centers. Members to be sized according to floor load (300 lbs. PSF). All welded construction. Skid to be painted with an enamel coat after fabrication. All steel to be A-36 grade. Floor to be insulated with 3 ½" fiberglass batt over galvanized belly pan.
<b>Standard Shelter Floor Construction</b>	A sub floor 1-1/8" Sturdi-Floor, T&G exterior grade plywood. Plywood to be secured to the steel floor framing using self-drilling cadmium plated screws. Floor covering will be 1/8" x 12" x 12" (.32cm x 30.5cm x 30.5cm) commercial grade vinyl floor tile. Floor loading designed for 300 lbs PSF.
<b>Standard Shelter Wall Construction</b>	All exterior wall sections will be thru-bolted to 12 gauge galvanized and painted steel exterior angles and 16 gauge painted steel interior angles, using cadmium plated steel nuts, bolts and washers. Roof connection to exterior walls will be thru-bolted using the 3/16" galvanized steel roof skirt and cadmium plated fasteners. Wall framing will be 1 5/8" x 3 5/8" 18 gauge galvanized steel studs at 16" centers. Exterior finish will be 20 gauge painted galvanized sheet steel, pop riveted to the metal studs with stainless steel rivets. Interior finish will be fire retardant embossed FRP, white, laminated to ½" (1.3cm) plywood. Insulation will be 3 ½" (8.9cm) fiberglass batt with vapor barrier, (R-11).
<b>Standard Shelter Roof Treatment</b>	Joists shall be 1 5/8"x 6", 18 gauge galvanized steel framing members on 16" (40.6cm) centers. The outside sheathing will be ½" (1.3cm) OSB board with an exterior finish of .045 EPDM rubber membrane. The interior ceiling finish will be .013 white embossed fire retardant FRP laminated to ½" plywood. Insulation shall be 5 ½" (R-19) fiberglass batt with vapor barrier.
<b>Standard Shelter Door Construction</b>	Exterior doors will be 16 gauge insulated steel with heavy-duty stainless steel hinges, 12 gauge painted steel door frame, door closer, lockset, deadbolt, threshold, drip cap, and weather-stripping.
<b>Standard Shelter Electrical</b>	Shelter wiring is installed in surface mounted EMT. Interior devices such as switches and receptacles are installed in surface mounted boxes. All circuits are breaker protected. A service entrance is provided on the exterior of the shelter for connecting to main electrical power supply. Additional entrances are provided for telephone and optional generator hook-ups. All electrical is installed in accordance with the National Electric Code.
<b>Air Conditioning and Heating Systems</b>	1 or 2 air conditioners; 1-ton (12,000 BTU) to 5-ton (60,000 BTU) capacity each, typical 3-5kW heat, wall mounted unit(s); tandem AC systems have lead lag controller. Standard configuration to include: thermostat, supply grill, return grill, low ambient fan control, adjustable time delay relay, low pressure by-pass, full length mounting brackets, rain hood, dry contact for remote on lockout, high and low pressure switches with lockout relay, 2" pleated filter, and internal disconnect ~ 230/208/1/60Hz
<b>Partial List of Shelter Installed Accessories</b>	<ul style="list-style-type: none"> <li>• Complete customization of all interior work and sleeping spaces</li> <li>• Surface and/or recessed mounted sodium exterior lights with photocell</li> <li>• Ground bar kit, ¼" x 4" x 20", exterior and/or interior mounted</li> <li>• Halo ground kit with accessories, #2 solid tinned copper drops</li> <li>• Wave guide entry ~ 2 to 12 ports</li> <li>• Exterior shelter receptacle, 120V, GFI</li> <li>• 200 Amp/240/120V/60Hz/1PH central power panel, to 66 breaker spaces and disconnect</li> <li>• 2" LB connectors for incoming power, optional generator</li> <li>• Shelter roof access ladder</li> <li>• Multiple duplex and/or four-plex receptacles, 20 amps each</li> <li>• Telco board, 4'x4'x3/4" with FRP on one side</li> <li>• Alarm terminal strip with open door, high/low temperature, smoke/fire alarm</li> <li>• Emergency lighting with battery backup</li> <li>• Fluorescent lights, 2-tube – 4'-8' each with RFI filter and wire guard</li> <li>• Set of exterior steps</li> <li>• Automatic or manual transfer switch</li> <li>• UPS and surge suppression systems, and much more</li> <li>• Counter Top, Fold down with supports, 18" W, computer slots</li> <li>• Truck leveling jacks, 15,000 lb static/12,000 lb lift capacity</li> <li>• Microwave dish and/or antenna platforms, steel grating with support</li> </ul>

# Representative Will-Burt Company Pneumatic Masts

